



St. Mary Catholic Secondary School

Grade 9 going into Grade 10
Course Selection Workshop
2020-2021



Guidance



Alternative Education

Community Involvement Hours

Continuing and Adult Education

Courses Levels and Calendars

Getting Ready for Post-Secondary

Graduation Requirements

myBlueprint

Ontario Youth Apprenticeship Program

Course Levels and Calendars

Receive Email Updates...



Course Selection is an important component of Secondary and Post-Secondary Pathways Planning.

Course calendar

St. Mary offers a wide selection of courses at many different levels. Students and parent/guardians can access our **COURSE CALENDAR** (courses offered and descriptions) online using **myBlueprint**. DCDSB's **Pathways to Success** guidebook and our



Course Option Packages

- Cover Page (with all your reminders!)
- myBlueprint Course Planner
 - Step by Step Instructions
- Course Offerings List
- Choosing the Right Math (Gr 9 & 10 only)
- Pathways Booklet (Gr 9 & 10 only)
 - grad requirements, program opportunities

Introduction

- ❑ Choosing courses – consider post-secondary plans/past performance
- ❑ Remedial Summer School – 35% required/2 wks
 - Registration begins in April/May for **Semester 1** courses
- ❑ Accelerated Summer School - full month



Graduation Requirements

- 30 Credits (18 Compulsory) – see your report card or your “course planner” for your personal “graduation requirements” summary
- OSSLT – Spring next year
- 40 hours of Community Service



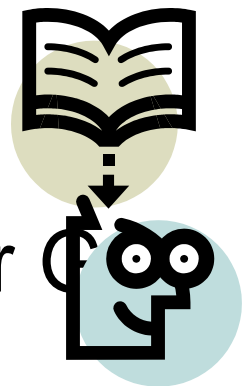


Educational Planning

- Should be working toward completing compulsories
- Note: Group 1, 2 & 3 have several options, Check **Pathways Booklet** for summary of grad requirements

Course Selections

- 8 courses + 1 alternate
- English, History, Math, Science, Religion & Civics/Careers are compulsory in Gr. 10
- Should choose Arts credit if not completed in grade 9, **remember to choose the correct grade – Grade 10!**
- CHC2D1 vs CHC2P1
- Plan ahead (check pre-requisites for Gr. 11/12 courses)



Course Selections

French Immersion

Compulsory Courses:

- French – FIF2DF
- Religion – HRE2OF
- History – CHC2DF/CHC2PF



Course Types

The same as in Grade 9 – 5th digit identifies the level

- Academic (D)
- Applied (P)
- Locally Developed (L)
- Open (O)



For English, History, Math and Science – must choose correct level.

Changing Levels – Transfer course required for Math

Civic/Careers & Religion are open (**two options for Religion (HRE201 or HRE202)**)



Selecting Course for Grade 10

- Explanation of process
- Online course calendar
- Course Codes and Titles (Handout)
- Don't have internet access or printer – see your guidance counsellor well **BEFORE** the deadline!



Guidance ▼

- Alternative Education
- Community Involvement Hours
- Continuing and Adult Education
- Cooperative Education
- Courses Levels and Calendars
- Dual Credits
- Getting Ready for Post-Secondary
- Graduation Requirements
- myBlueprint**
- Ontario Youth Apprenticeship Program
- Pathway Programs

myBlueprint

Receive Email Updates...



Durham Catholic District School Board is committed to supporting Student Success and the Ministry of Education's mandate for **Creating Pathways to Success**, as a results students in Grades 7 to 12 will be transitioning to myBlueprint Education Planner. This new web-based program is replacing Career Cruising.

myBlueprint allows students to:





1 Step 1
Add Courses

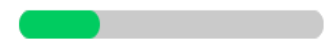
2 Step 2
Review Courses

3 Step 3
Submit Courses

Review Course Selections

Required _____ 8/30

Total Credits _____ 8



View Progress

- Home
- Who Am I
- High School
- Post-Secondary
- Work
- Money
- Guides
- Favourites

Grade 9 Current Year	Grade 10 Next Year	Grade 11 Plan Ahead	Grade 12 Plan Ahead
English - Academic ENG1D (ENG1D1) • 1 Credit	+ English	+ English	+ English
Principles Of Mathem... MPM1D (MPM1D1) • 1 Credit	+ Mathematics	+ Mathematics	+ Religion
Science - Academic SNC1D (SNC1D1) • 1 Credit	+ Science	+ Religion	+ Course
Religious Education (Fr... HRE1O (HRE1OF) • 1 Credit	+ History	+ Course	+ Course
Healthy Active Living ... PPL1O (PPL1OG) • 1 Credit	+ Civics	+ Course	+ Course
Dramatic Arts ADA1O (ADA1O1) • 1 Credit	+ Careers	+ Course	+ Course
Geography of Canada ... CGC1D (CGC1DF) • 1 Credit	+ Religion	+ Course	+ Course
French Immersion FIF1D (FIF1DF) • 1 Credit	+ Course	+ Course	+ Course



SHSM Planner

Your school offers 4 Specialist High Skills Majors

Learn More

Pathway Eligibility

Last Updated
January 16, 2020 10:38 AM

Refresh Eligibility

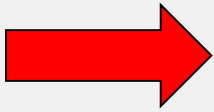
- Apprenticeship _____ 1
- College _____ 0
- University _____ 0
- Workplace _____ 0

Learn More



- Home
- Who Am I
- High School
- Post-Secondary
- Work
- Money
- Guides
- Favourites

Filters



Grade

Discipline



Courses...

- Arts
- Business Studies
- Canadian and World Studies
- Career Studies/Civics
- Classical and International Languages
- English
- French as a second language
- French Immersion
- Guidance and Career Education
- Health and Physical Education
- Interdisciplinary Studies

1 Step 1
Add Courses

2 Step 2
Review Courses

3 Step 3
Submit Courses

Review Course Selections



Grade 9 Current Year	Grade 10 Next Year	Grade 11 Plan Ahead	Grade 12 Plan Ahead	→
English - Applied ENG1P (ENG1P1) • 1 Credit	English - Academic ENG2D (ENG2D1) • 1 Credit	+ English	+ English	
Principles Of Mathem... MPM1D (MPM1D1) • 1 Credit	Principles Of Mathem... MPM2D (MPM2D1) • 1 Credit	+ Mathematics	+ Religion	
Science - Applied SNC1P (SNC1P1) • 1 Credit	Science - Applied SNC2P (SNC2P1) • 1 Credit	+ Religion	+ Course	
Core French - Academic FSF1D (FSF1D1) • 1 Credit	CHC2D1 Canadian Hi... CHC2D (CHC2D1) • 1 Credit	+ Course	+ Course	
Geography Of Canada... CGC1D (CGC1D1) • 1 Credit	Civics CHV2O (CHV2O1) • 0.5 Credit	+ Course	+ Course	
Religious Education HRE1O (HRE1O1) • 1 Credit	Career Studies GLC2O (GLC2O1) • 0.5 Credit	+ Course	+ Course	
Healthy Active Living ... PPL1O (PPL1O3) • 1 Credit	Religious Education HRE2O (HRE2O1) • 1 Credit	+ Course	+ Course	
Dance ATC1O (ATC1O1) • 1 Credit	Introduction To Business BBI2O (BBI2O1) • 1 Credit	+ Course	+ Course	
	Construction Technol...			

Review Courses

! Review your course selections before submitting. Once submitted, you can no longer make changes in myBlueprint.

- Step 1 Add Courses **2 Step 2 Review Courses** Step 3 Submit Courses

Submit Course Selections

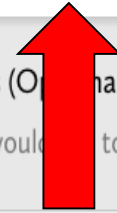
1 Review Course Selections

- ✓ ENG2D1
English - Academic
- ✓ MPM2D1
Principles Of Mathematics
- ✓ SNC2P1
Science - Applied
- ✓ CHC2D1
CHC2D1 Canadian History In The 20th Cent
- ✓ CHV2O1
Civics
- ✓ GLC2O1
Career Studies
- ✓ HRE2O1
Religious Education

2 Add Comments (Optional)

Add comments you would like to include

Add Comments





Course Selection Sign Off Sheet

STUDENT STANESIC, DIANA	GRADE 9	AGE -1	SCHOOL St. Mary Catholic Secondary School
EMAIL DIANA.STANESIC@DCDSB.CA	OEN		

Courses Selected (8)

Submitted: 2/2/2020 2:24:10 PM

CODE	COURSE	TYPE	CREDIT	REQUIREMENT	ISSUES
ENG2D (ENG2D1) ¹	English - Academic	D	1	Eng	
MPM2D (MPM2D1) ²	Principles Of Mathematics	D	1	Math	
SNC2P (SNC2P1)	Science - Applied	P	1	Sci	
CHC2D (CHC2D1) ³	CHC2D1 Canadian History In The 20th Cent	D	1	His	
CHV2O (CHV2O1)	Civics	O	0.5	Civ	
GLC2O (GLC2O1)	Career Studies	O	0.5	Car	
HRE2O (HRE2O1)	Religious Education	O	1	Elec.	
BBI2O (BBI2O1)	Introduction To Business	O	1	Grp2	
TCJ2O (TCJ2O1)	Construction Technology	O	1	Grp3	

Alternate Courses Selected (1)

ADA2O (ADA2O1)	Dramatic Arts	O	1		
----------------	---------------	---	---	--	--

It is strongly recommended that students enrolling in this course earned a final grade of no less than 70% in his/her Academic English class in the previous year. Students wishing to change levels from applied to academic should have achieved a grade of 85% or higher in Grade 9.

It is strongly recommended that students have achieved 65% or above in MPM1D1 if choosing this course.

It is strongly recommended that students taking ENG2D must also take this course.

Ontario Secondary School Diploma - Credit summary

	ENG	FRE	MATH	SCI	ART	PE	CIV	CAR	HIS	GEO	GRP1	GRP2	GRP3	COMP.	ELEC.	TOTAL
EARNED	0/4	0/1	0/3	0/2	0/1	0/1	0/5	0/5	0/1	0/1	0/1	0/1	0/1	0/18	0/12	0/30
ON TRACK*	2/4	1/1	2/3	2/2	1/1	1/1	.5/.5	.5/.5	1/1	1/1	0/1	1/1	1/1	14/18	2/12	16/30

On Track includes earned, current and next year courses. Students must also complete 40 hours of Community Involvement and the Ontario Secondary School Literacy Test to graduate. Please see your Counsellor for your current status regarding these requirements.

Student Signature:


Parent/Guardian Signature:

NEW COURSES FOR 2020-2021

- LWSBD1 – Spanish
- Check course lists for ALL elective options!

Students can take more than one
Phys. Ed. Course as long as the first
5 digits in the course are NOT the same
i.e., PPL203 and PAF203





Course Options are due on: **Thursday, February 27th**

You will be called down by GRADE, by ALPHA.
Remember to bring the following with you:

- Student Activity Fee of \$75
 - Proof of payment/Cash On-Line receipt
- Course Request Sign Off Sheet (signed by parent/guardian)

Reminders:

- Not Returning? - Must indicate on-line and in print (see Guidance)
- Q & A – during all lunches the week of Feb 11th, no scheduled appointments during this time, drop by and visit us!
- **All Course Selection items will be distributed in Homeroom**

