



St. Mary Catholic Secondary School

Grade 9 going into Grade 10
Course Selection Workshop
2019-2020



Course Option Packages

- Cover Page (with all your reminders!)
 - Career Cruising Course Planner
 - Step by Step Instructions
 - Course Offerings List
 - Choosing the Right Math (Gr 9 & 10 only)
 - Pathways Booklet (Gr 9 & 10 only)
 - grad requirements, program opportunities
 - Career Cruising Log in
- (Ask any teacher if you have forgotten it)

Introduction

- ❑ Choosing courses – consider post-secondary plans/past performance
- ❑ Remedial Summer School – 35% required/2 wks
 - Registration begins in May for **Semester 1** courses
- ❑ Accelerated Summer School - full month



Graduation Requirements

- 30 Credits (18 Compulsory) – see your report card or “**My Course Plan**” for your personal “graduation requirements” summary
- OSSLT – Spring next year
- 40 hours of Community Service^e



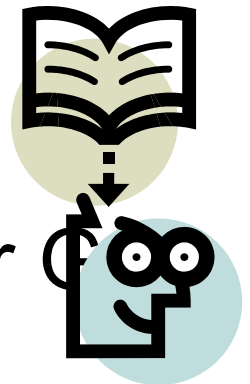


Educational Planning

- Should be working toward completing compulsories
- Note: Group 1, 2 & 3 have several options, Check **Pathways Booklet** for summary of grad requirements

Course Selections

- 8 courses + 1 alternate
- English, History, Math, Science, Religion & Civics/Careers are compulsory in Gr. 10
- Should choose Arts credit if not completed in grade 9, **remember to choose the correct grade – Grade 10!**
- CHC2D1 vs CHC2P1
- Plan ahead (check pre-requisites for Gr. 11/12 courses)



Course Selections

Extended French/French Immersion

Compulsory Courses:

- French – FEF2DF
- Religion – HRE20F or HRE20G
- History – CHC2DF/CHC2PF
- Civics – CHV20F
- Careers – GLC20F



Course Types

The same as in Grade 9 – 5th digit identifies the level

- Academic (D)
- Applied (P)
- Locally Developed (L)
- Open (O)



For English, History, Math and Science – must choose correct level.

Changing Levels – Transfer course required for Math

Civic/Careers & Religion are open (**two options for Religion (HRE201 or HRE202)**)



Selecting Course for Grade 10

- Explanation of process
- Online course calendar
- Course Codes and Titles (Handout)
- Don't have internet access or printer – see your guidance counsellor well **BEFORE** the deadline!



Guidance

[Alternative Education](#)

Career Cruising

[Community Involvement Hours](#)

[Continuing and Adult Education](#)

[Courses Levels and Calendars](#)

[Dual Credits](#)

[Getting Ready for Post-Secondary](#)

[Graduation Requirements](#)

Career Cruising

[Receive Email Updates...](#)



Career Cruising is a self-exploration and pathways planning program that helps people of all ages achieve their potential in school, career and life. DCDSB/St.

Mary CSS uses Career Cruising to help students plan their future. By using personal assessment tools, exploring detailed

Year 9	Year 10	Year 11	Year 12
Religion 9 HRE1O1-S1 1	+ Religion 10	+ Religion 11	+ Religion 12
English 9 ENG1D1 1	+ English 10	+ English 11	+ English 12
Math 9 MPM1DA-S1 1	+ Math 10	+ Math 11	+ Elective
Science 9 SNC1D1 1	+ Science 10	+ Elective	+ Elective
Geography 9 CGC1D1-S1 1	+ History 10	+ Elective	+ Elective
PhysEd PAF1O3 1	+ Career Studies	+ Elective	+ Elective
French 9 FSF1D1-S1 1	+ Civics	+ Elective	+ Elective
Art 9-12 AVI1O1 1	+ Elective	+ Elective	+ Elective
Credits: 8	+ Elective	Credits: 0	Credits: 0
	+ Alternate		Add Column
	SUBMIT		
	Credits: 0		

Graduation Tracking

8 / 30 Credits

[Learn More](#)

SHSM

[Learn More](#)

Cluster Possibilities

Saved Clusters

[Click here to add](#)

Recommended Clusters

[Click here to add](#)

[More »](#)

Program Possibilities

Province... ▾

Elective



Discipline

10th Year Elective/Alternative Courses

Name	Code	Credit	Type	Grade
Drama	ADA201	1	O	10
Drama - Musical Theatre	ADB201	1	O	10
Instrumental Music: (one year experience)	AMI201	1	O	10
Instrumental Music: (beginner)	AMU201	1	O	10
Vocal Music (Beginner)	AMV200	1	O	10

 Earned  Planned / In Progress

 Delete Course

French 9
FSF1D1-S1

Civics
CHV201

+ Elective

+ Elective

Art 9-12
AVI101

Drama - Musical Theatre
ADB201

+ Elective

+ Elective

Program Possibilities

Province...

COURSE REQUEST SIGN OFF SHEET

[← Back](#)

 [Print This Document](#)

COURSE REQUEST SIGN OFF SHEET



STUDENT INFO

Sample02 Grade09
DCD-091084902 (Grade
9)
St Mary Catholic
Secondary School

SUBMISSION INFORMATION

Please return the signed sheet to the school along with your Student Activity Fees on February 21st, 2017.

CREDIT HISTORY

Code	Course	Mark	Year
HRE1O1-S1	Religion: Discipleship and Culture	-	02/18
ENG1D1	English - Academic	-	07/18
MPM1DA-S1	Principles of Mathematics (Advanced Placement Preparation)	-	02/18
SNC1D1	Science - Academic	-	07/18
CGC1D1-S1	Geography of Canada - Academic	-	02/18
PAF1O3	Personal and Fitness Activities: Yoga & Pilates Focus - Female	-	07/18
FSF1D1-S1	Core French - Academic	-	02/18
AV11O1	Visual Arts	-	07/18

Ontario Secondary School Diploma (OSSD)

	Earned	Planned	Remaining
English	0	2	2
Mathematics	0	2	1
Science	0	2	0
History	0	1	0
Geography	0	1	0
Civics	0	0.5	0
Career Studies	0	0.5	0
Arts	0	1	0
Health & Physical Education	0	1	0
French	0	1	0
Group 1	0	0	1
Group 2	0	1	0
Group 3	0	1	0
General Electives	0	2	10
16 / 30 Credits	0	16	14

Community Hours: 0/40

Literacy Test: Required

COURSE REQUESTS


Code	Course Name	Notes	Alternate
HRE2O1	Religion: Christ and Culture		
ENG2D1	English - Applied		

NEW COURSES FOR 2019-2020

- HRE20G – Religion Through the Arts (in French)
- ELS201 – Literacy Skills: Reading & Writing
- LWIBD1 – Italian
- PAF205 – Weight Training: Football option
- Check course lists for ALL elective options!

Students can take more than one
Phys. Ed. Course as long as the first
5 digits in the course are NOT the same
i.e., PPL203 and PAF203





Course Options are due on: **Wednesday, Feb 20th**

You will be called down by GRADE, by ALPHA.
Remember to bring the following with you:

- Student Activity Fee of \$75
 - Proof of payment/Cash On-Line receipt
- Course Request Sign Off Sheet with barcode (signed by parent/guardian)
- Coop Application (Gr 11 and 12 students only)

Reminders:

- Not Returning? - Must indicate on-line and in print (see Guidance)
- Q & A – during all lunches the week of Feb 11th, no scheduled appointments during this time, drop by and visit us!
- **All Course Selection items including Career Cruising Passwords will be distributed in Period 4**



The End